



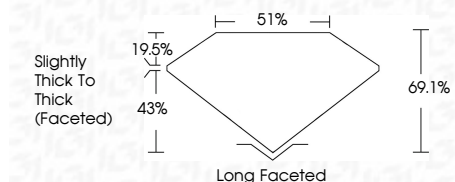
**ELECTRONIC COPY**

LG791644868  
Report verification at igi.org



April 27, 2026  
IGI Report Number **LG791644868**  
Description **LABORATORY GROWN DIAMOND**  
Shape and Cutting Style **CUSHION BRILLIANT**  
Measurements **11.06 X 8.26 X 5.71 MM**

**GRADING RESULTS**  
Carat Weight **4.22 CARATS**  
Color Grade **I**  
Clarity Grade **VS 1**



**ADDITIONAL GRADING INFORMATION**  
Polish **EXCELLENT**  
Symmetry **EXCELLENT**  
Fluorescence **NONE**  
Inscription(s) **IGI LG791644868**  
Comments: This Laboratory Grown Diamond was created by Chemical Vapor Deposition (CVD) growth process. Type IIa



April 27, 2026  
IGI Report No LG791644868  
**CUSHION BRILLIANT**  
11.06 X 8.26 X 5.71 MM  
4.22 CARATS  
I  
VS 1  
69.1%  
43%  
Slightly Thick To Thick (Faceted)  
Long Faceted  
EXCELLENT  
EXCELLENT  
NONE  
IGI LG791644868  
Comments: This Laboratory Grown Diamond was created by Chemical Vapor Deposition (CVD) growth process. Type IIa

**LABORATORY GROWN DIAMOND REPORT**

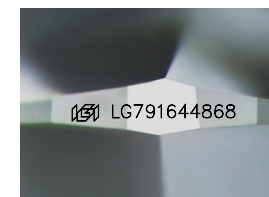
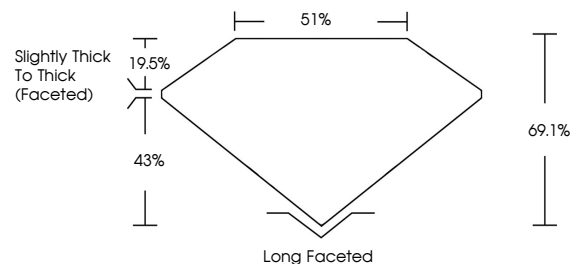
April 27, 2026  
IGI Report Number **LG791644868**  
Description **LABORATORY GROWN DIAMOND**  
Shape and Cutting Style **CUSHION BRILLIANT**  
Measurements **11.06 X 8.26 X 5.71 MM**

**GRADING RESULTS**  
Carat Weight **4.22 CARATS**  
Color Grade **I**  
Clarity Grade **VS 1**

**ADDITIONAL GRADING INFORMATION**  
Polish **EXCELLENT**  
Symmetry **EXCELLENT**  
Fluorescence **NONE**  
Inscription(s) **IGI LG791644868**

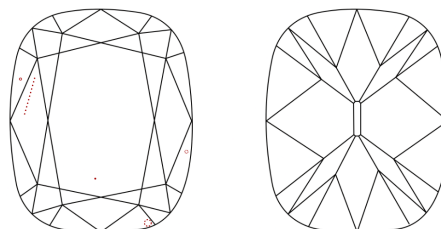
Comments: This Laboratory Grown Diamond was created by Chemical Vapor Deposition (CVD) growth process. Type IIa

**PROPORTIONS**



Sample Image Used

**CLARITY CHARACTERISTICS**



**KEY TO SYMBOLS**

Red symbols indicate internal characteristics.  
Green symbols indicate external characteristics.

**COLOR**

D E F G H I J Faint Very Light Light

**CLARITY**

FL	IF	VS <sup>1-2</sup>	VS <sup>1-2</sup>	SI <sup>1-2</sup>	I <sup>1-3</sup>
Flawless	Internally Flawless	Very Very Slightly Included	Very Slightly Included	Slightly Included	Included

