



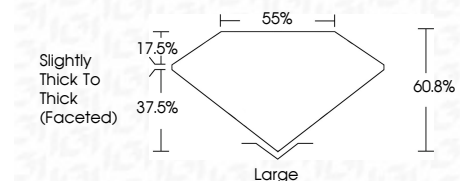
ELECTRONIC COPY

LG778615152 Report verification at igi.org



March 5, 2026 IGI Report Number LG778615152 Description LABORATORY GROWN DIAMOND Shape and Cutting Style OVAL MODIFIED BRILLIANT Measurements 13.03 X 6.71 X 4.08 MM

GRADING RESULTS Carat Weight 2.50 CARATS Color Grade VERY LIGHT BROWN Clarity Grade VVS 2



ADDITIONAL GRADING INFORMATION Polish EXCELLENT Symmetry EXCELLENT Fluorescence NONE Inscription(s) IGI LG778615152 Comments: This Laboratory Grown Diamond was created by Chemical Vapor Deposition (CVD) growth process.



March 5, 2026 IGI Report No LG778615152 OVAL MODIFIED BRILLIANT 13.03 X 6.71 X 4.08 MM 2.50 CARATS VERY LIGHT BROWN VVS 2 60.8% 55% Slightly Thick To Thick (Faceted) Large EXCELLENT EXCELLENT NONE NONE IGI LG778615152 Comments: This Laboratory Grown Diamond was created by Chemical Vapor Deposition (CVD) growth process.

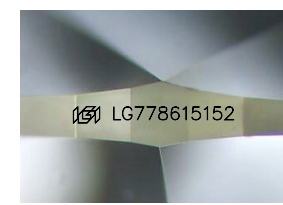
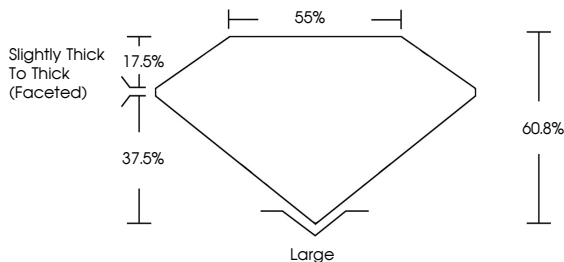
March 5, 2026 IGI Report Number LG778615152 Description LABORATORY GROWN DIAMOND Shape and Cutting Style OVAL MODIFIED BRILLIANT Measurements 13.03 X 6.71 X 4.08 MM

GRADING RESULTS Carat Weight 2.50 CARATS Color Grade VERY LIGHT BROWN Clarity Grade VVS 2

ADDITIONAL GRADING INFORMATION Polish EXCELLENT Symmetry EXCELLENT Fluorescence NONE Inscription(s) IGI LG778615152

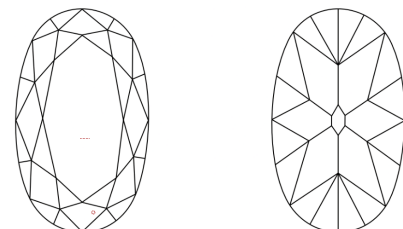
Comments: This Laboratory Grown Diamond was created by Chemical Vapor Deposition (CVD) growth process.

PROPORTIONS



Sample Image Used

CLARITY CHARACTERISTICS



KEY TO SYMBOLS Red symbols indicate internal characteristics. Green symbols indicate external characteristics.

COLOR

Table with color scale: D, E, F, G, H, I, J, Faint, Very Light, Light

CLARITY

Table with clarity scale: FL, IF, VS 1-2, VS 1-2, SI 1-2, I 1-3, Flawless, Internally Flawless, Very Very Slightly Included, Very Slightly Included, Slightly Included, Included

